

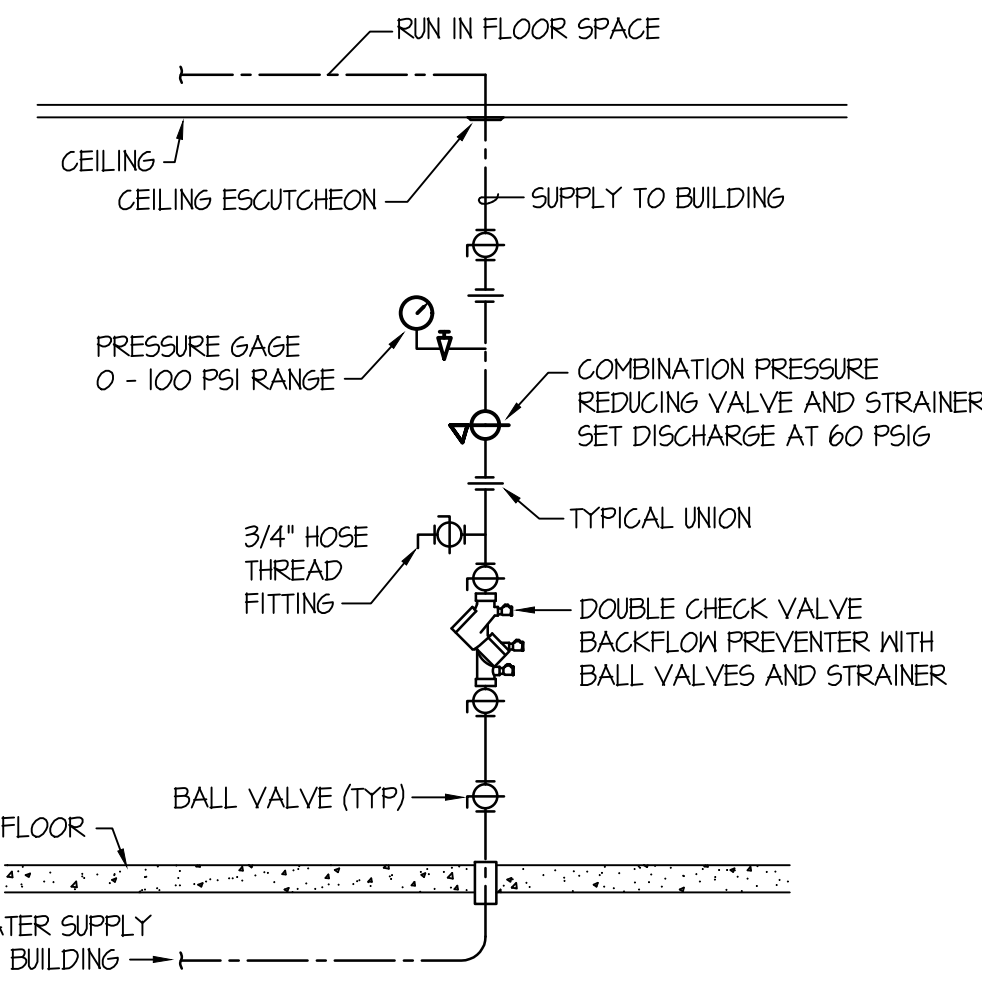
NOTE:
PROVIDE SLEEVES WHERE PIPING PENETRATES BUILDING AT FLOOR AND WALLS. SEAL AROUND PENETRATION WITH FLEXIBLE MASTIC AT FLOOR. PROVIDE 2" ANNULAR SPACE AROUND AND RESTRAIN FLANGE SPIGOT.

VERTICAL FIRE RISER DETAIL

NO SCALE

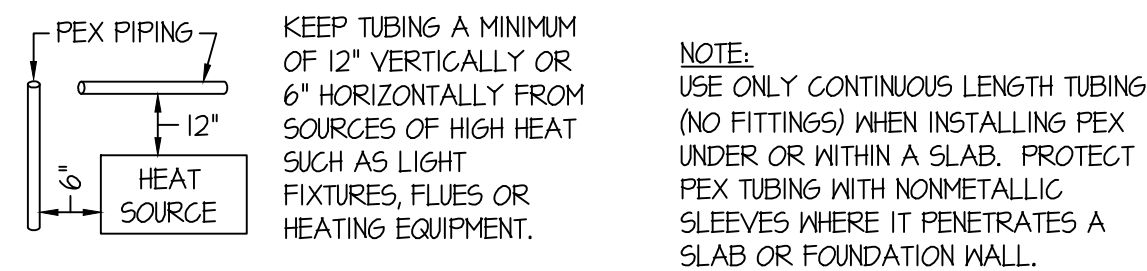
WET RISER DETAIL NOTES

- 1 WATER SUPPLY FROM CITY WATER MAIN. USE CLASS 53 DUCTILE IRON WHEN CROSSING UNDER BLDG FOUNDATION.
- 2 USE FLEXIBLE GROOVED PIPE COUPLING ONLY IF SEISMIC BRACING IS REQUIRED. SEE NOTE #12.
- 3 GROOVED BUTTERFLY VALVE WITH INTEGRAL SUPERVISORY SWITCH.
- 4 DOUBLE CHECK BACKFLOW PREVENTER WITH RELATED TRIM AND GAUGES.
- 5 3-1/2" DIAMETER WATER GAUGE WITH 1/4" TEST AND ISOLATION VALVE.
- 6 VANE TYPE WATER FLOW SWITCH.
- 7 SUPPLY TO WET PIPE FIRE SPRINKLER SYSTEM.
- 8 SHING CHECK VALVE.
- 9 RISER MANIFOLD - INCLUDES PRESSURE GAUGE, FLOW SWITCH, PRESSURE RELIEF VALVE, AND TEST AND MAIN DRAIN DEVICE.
- 10 INSPECTOR'S TEST & MAIN DRAIN DEVICE [IT] PIPE TO OUTSIDE.
- 11 PRESSURE RELIEF VALVE SHALL BE REQUIRED SET AT ITS PSI-PIPED TO DISCHARGE OUTSIDE.
- 12 SEISMIC BRACING REQUIRED IN SEISMIC DESIGN CATEGORY C, D, E, F.
- 13 1/2" AUTOMATIC BALL DRIP VALVE.
- 14 PIPE TO DRAIN OUTSIDE.
- 15 WEATHERPROOF ELECTRIC BELL OR HORN AND STROBE (OUTSIDE).
- 16 OUT TO FIRE DEPARTMENT CONNECTION WITH GALVANIZED SCH 40 PIPING- PROVIDE BALL DRIP WHEN TRAPPING PIPE. SIZE CONNECTION AS REQUIRED. NOTE: PIPE FDG TO REMOTE LOCATION WHEN REQUIRED BY FIRE MARSHAL.
- 17 GALVANIZED FLANGE AND SPOOL PIECE
- 18 CLASS 53 D.I. FLANGED SPIGOT
- 19 3/4" A.T.R.
- 20 3/4" BENT EYE BOLT
- 21 MECHANICAL JOINT 90° ELL
- 22 CONCRETE THRUST BLOCK WITH 5 SQ. FEET BEARING AREA
- 23 UNDISTURBED EARTH
- 24 LOW TEMPERATURE SENSOR - MOUNTED ON WALL - THIS SWITCH IS PROVIDED UNDER DIVISION 28 OF THE SPECIFICATIONS.
- 25 SPARE HEAD CABINET WITH SPARE SPRINKLER HEADS AND WRENCHES.
- 26 LAMINATED SYSTEM MAP WITH SYSTEM START-UP AND SHUT-DOWN INSTRUCTIONS.



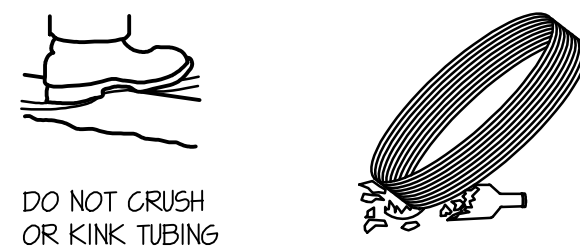
VERTICAL WATER PRESSURE REDUCING STATION

NO SCALE



MIN. CLEARANCES

TUBING SIZE	MIN. RADIUS BENDING
3/8"	4"
1/2"	5"
3/4"	7"
1"	9"



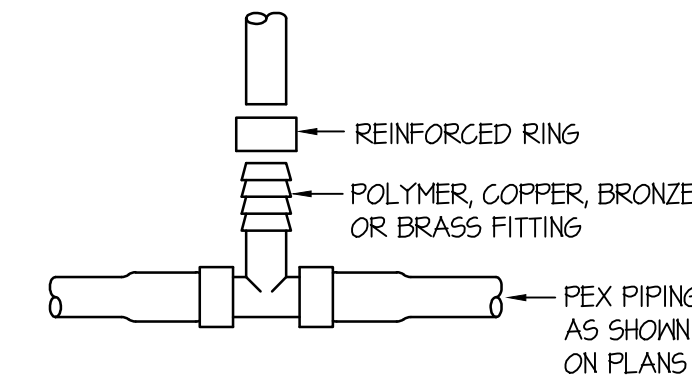
TUBING AND FITTINGS SHALL BE STORED UNDERCOVER FOR CLEANLINESS AND TO AVOID EXPOSURE TO SUNLIGHT. CONSULT MANUFACTURER FOR RECOMMENDED LIMITS TO OUTSIDE STORAGE.

PEX PIPE HANDLING DETAILS

NO SCALE

THIS TYPE (COLD EXPANSION) OF FITTING REQUIRES THAT THE PEX PIPING, WITH REINFORCING PEX RING PLACED OVER THE END OF THE END OF THE PIPE, IS EXPANDED BEFORE THE FITTING IS INSERTED INTO THE PIPE END. THE EXPANDED PIPE END IS ALLOWED TO RETRACT ONTO THE FITTING TO FORM THE SEAL. THE MEMORY OF THE PIPE ALLOWS IT TO TIGHTEN OVER THE FITTING. AN EXPANDER TOOL IS REQUIRED TO EXPAND THE PIPE AND THE PEX RING TOGETHER.

ALL JOINTS (TEES, ELBOWS, COUPLINGS, ETC.) ARE JOINTED SIMILARLY.



NOTE:
STAINLESS STEEL CAMP BANDS ARE ALSO PERMITTED FOR REINFORCING RING.

PEX PIPE FITTING DETAILS

NO SCALE

A NEW FACILITY FOR:

VALLEY HOUSE

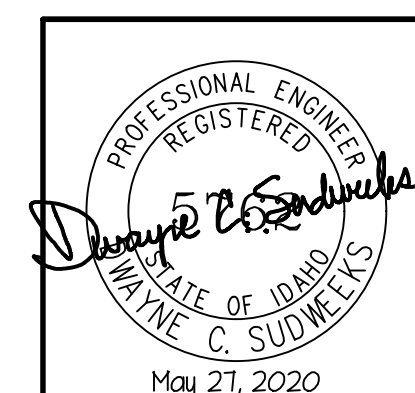
125 ROSE ST., TWIN FALLS, ID 83301

PLUMBING DETAILS AND SCHEDULES

Laughlin Ricks Architecture

architecture/planning

935 Shoshone Street North * Twin Falls, Idaho 83301
(208) 736-8050 Fax: (208) 733-0950



Engineered Systems Associates
1355 EAST CENTER
POCATELLO, IDAHO 83201
PHONE: (208) 233-0501
FAX: (208) 233-0529
EMAIL: esa@engsystems.com
ESA JOB NUMBER: 19095

DATE: _____
Drawn: _____ Checked: _____

P2-1